

2019 Sagan Summer Workshop
Astrobiology for Astronomers
July 15-19, 2019

HANDS-ON SESSIONS

SET-UP

The software for the hands-on sessions is installed on the Amazon cloud (Amazon Web Services, or AWS). The login information will be provided when you pick up your badge. To access your AWS account and then run the software, you will need an **X terminal and X server**.

BEFORE THE WORKSHOP:

Installation for Mac OS

On **MacOS**, the Terminal app is already included as your terminal emulator. You may also have to install XQuartz (<https://www.xquartz.org/>), the X Window System for MacOS.

Installation for Windows

On **Windows** operating systems, you will need to install software packages to get a terminal emulator and X server.

PuTTY (<https://www.putty.org/>) is a terminal emulation software and Xming (<https://sourceforge.net/projects/xming/>) is a free X Window System server for Windows. We recommend downloading and installing them; Cygwin (<https://cygwin.com/>) will work, too, but overall the Cygwin packages are very large, and you have to make sure to install the Cygwin/X packages, too.

- To install PuTTY, download the msi file, then double-click on it to start the installation.
- To install Xming, download the exe file, then double-click on it to start the installation, choosing the default options.

Next, you have to configure Xming and PuTTY; for the latter, you have to wait until you get your AWS account information.

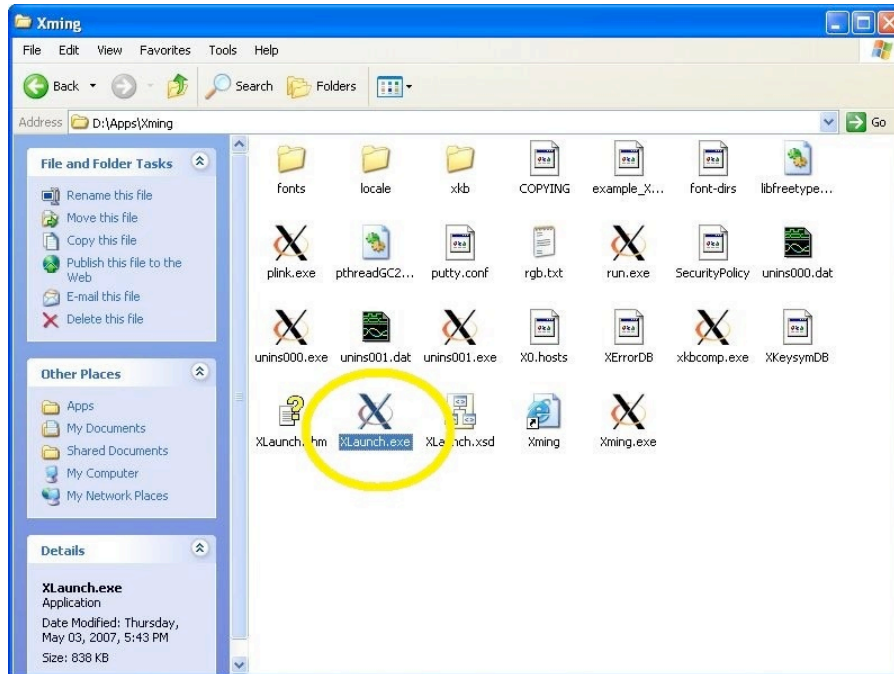
AT THE WORKSHOP:

Configuration for Windows

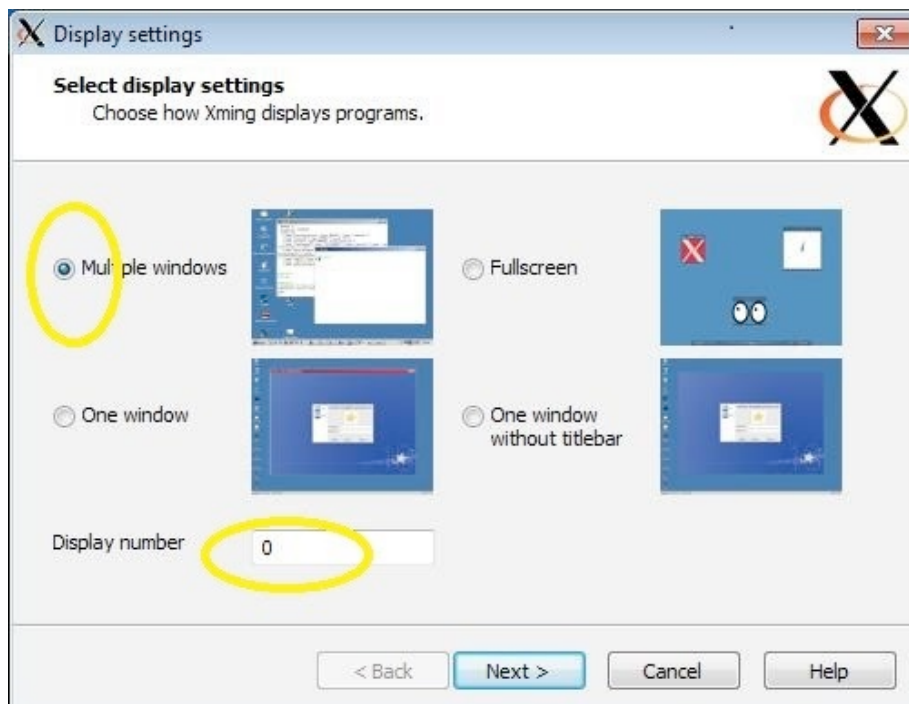
Xming

Go to the directory where you installed Xming.

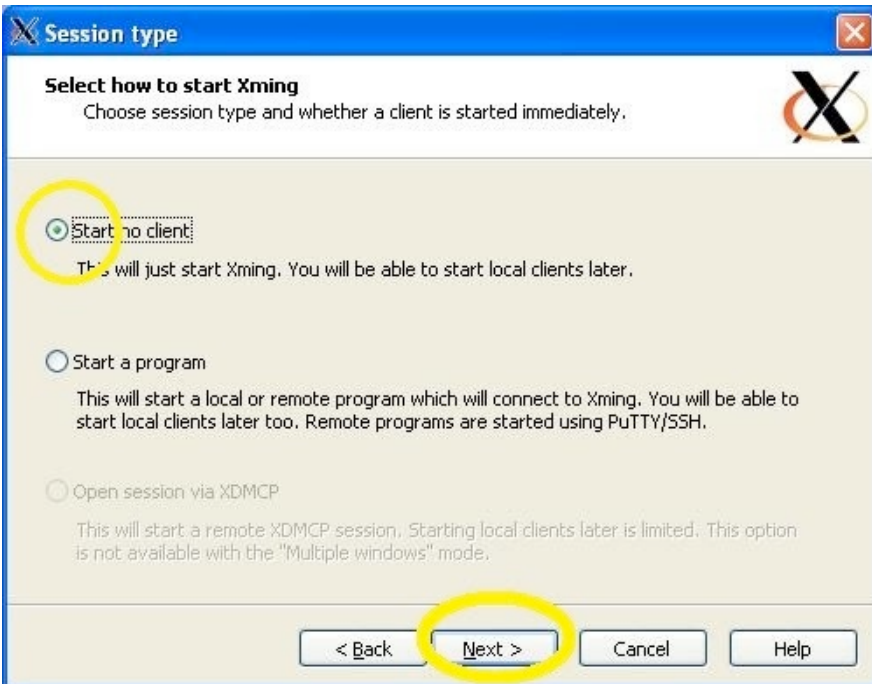
Launch Xlaunch.exe (by double-clicking on it):



Select **Multiple Windows** and enter **0** for Display number. Click Next.

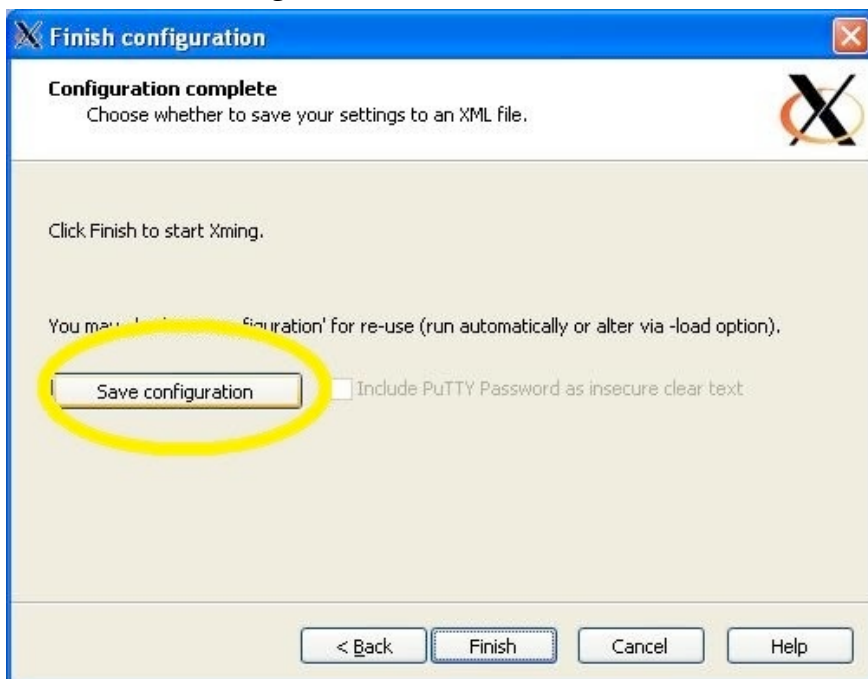


Select **Start no client** then click Next



Keep the defaults on the next screen (“Additional parameters”).

Click on Save Configuration:



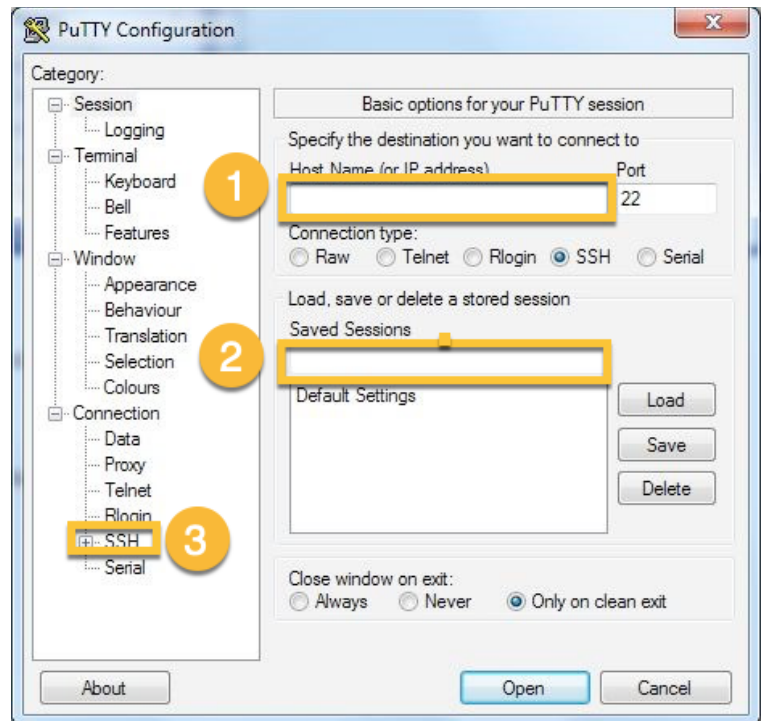
This will ask you to save a file called config.xlaunch. Save this file in one of your directories; you will need it to start Xming with the pre-set configuration.

PuTTY

Go to the directory where you installed PuTTY.
Launch putty.exe (by double-clicking on it).

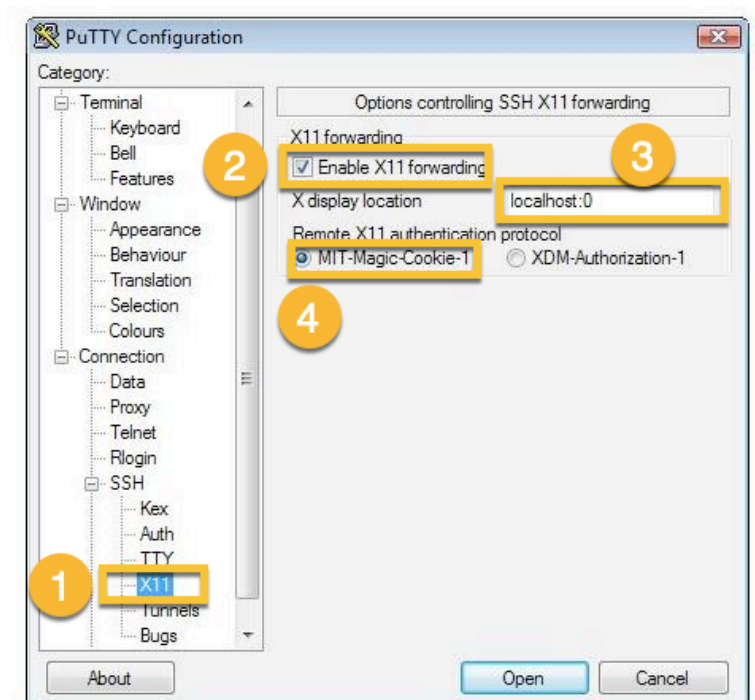
STEP 1

- 1 Enter the IP address that was assigned to you
- 2 Enter Sagan Workshop
- 3 Expand the SSH menu by selecting "+" by SSH from the left-side menu



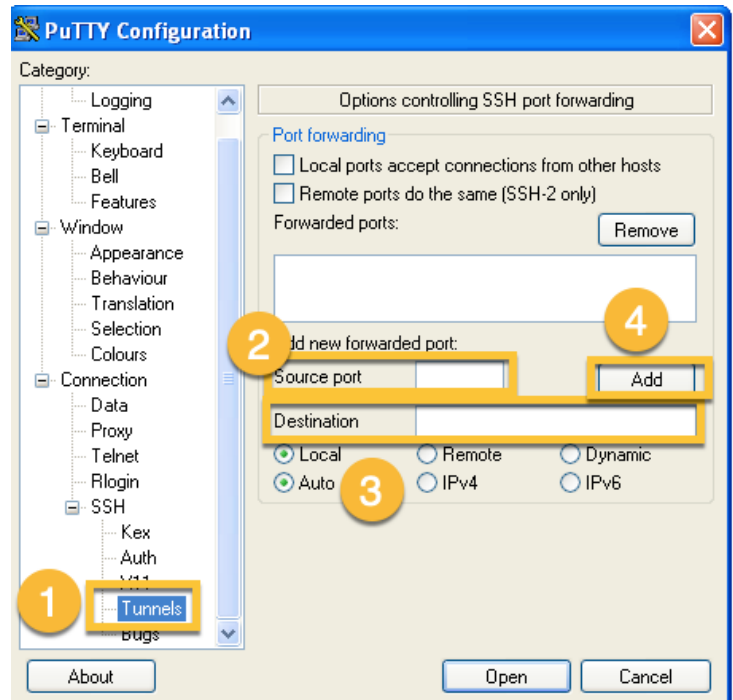
STEP 2

- 1 Select "X11" from SSH submenu
- 2 Check "Enable X11 forwarding" box
- 3 Enter "localhost:0" for X display location
- 4 Select MIT-Magic-Cookie-1



STEP 3

- 1 Select "Tunnels" from SSH submenu
- 2 Enter "8888" for Source port
- 3 Enter "localhost:8888" for Destination
- 4 Select "Add"



STEP 4

- 1 Select "Session" from left-side menu
- 2 Select "Save"; now "Sagan Workshop" will show up under Saved Sessions.

