

Kerri Cahoy

Postdoc (Oct 2008)

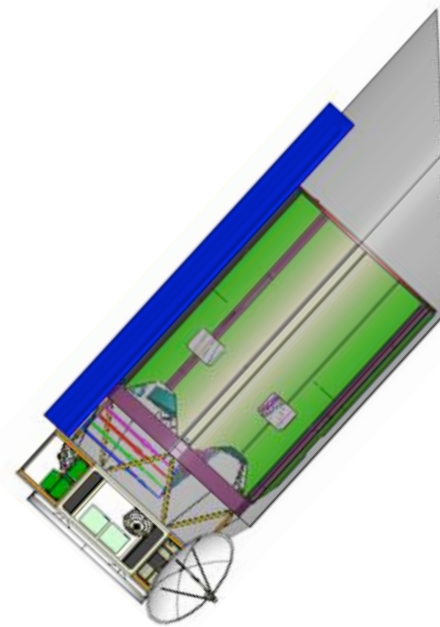
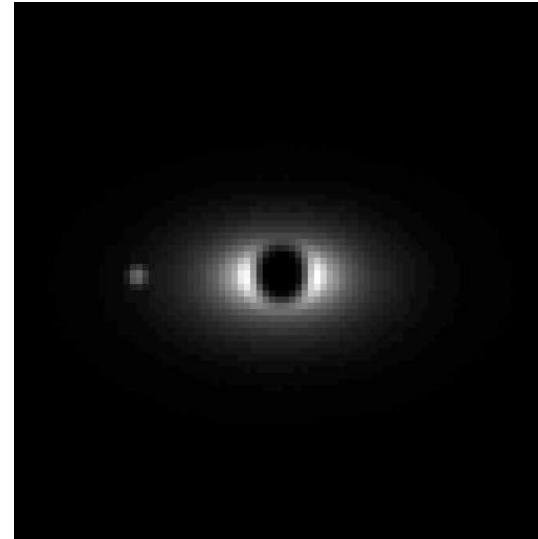
NASA Ames Research Center  
with Mark Marley, Tom Greene

## Direct imaging of exoplanets

with Guyon, Levine, Shaklan, Belikov  
Space telescope + PIAA coronagraph  
Optical (400—900 nm)  
PECO, TPF-C

## Modeling exoplanet atmospheres

with Marley, Fortney, Freedman  
0.35—30  $\mu\text{m}$   
radiative transfer and scattering  
albedos, reflected spectra



Kerri Cahoy

## Planetary atmospheres

M.S., Ph.D., Electrical Engineering, Stanford

Radio occultation, Mars ionosphere  
with Mars Global Surveyor

Thermal tides, atmospheric dynamics  
LMD-AOPP-IAA GCM

GPS radio occultation, Earth atm/iono  
with COSMIC, CHAMP, SAC-C, others

RF communications satellite payloads

Space Systems Loral, Geo/Leo

Terrestar-1, Sirius, XM, Intelsat, LDCM

Mars Rovers

B.S., Electrical Engineering, Cornell

