



Michelson Summer Workshop Orientation Information

Dr. Dawn Gelino

25 July 2005

Welcome to the 2005 Michelson Summer Workshop!

MSW 2005 is the 8th in an annual series of summer workshops

- This year's workshop is the first to emphasize **astrometry**
- Next year we will return to **interferometry**



The Local Organizing Committee

Your MSW LOC:

- Dawn Gelino
- Gerard van Belle
- Kathy Golden
- Shellie Hanna
- Helene Seibly
- Chris Baughman
- Helga Mycroft



The LOC will be handling all reimbursements, so treat them kindly!

25 July 2005

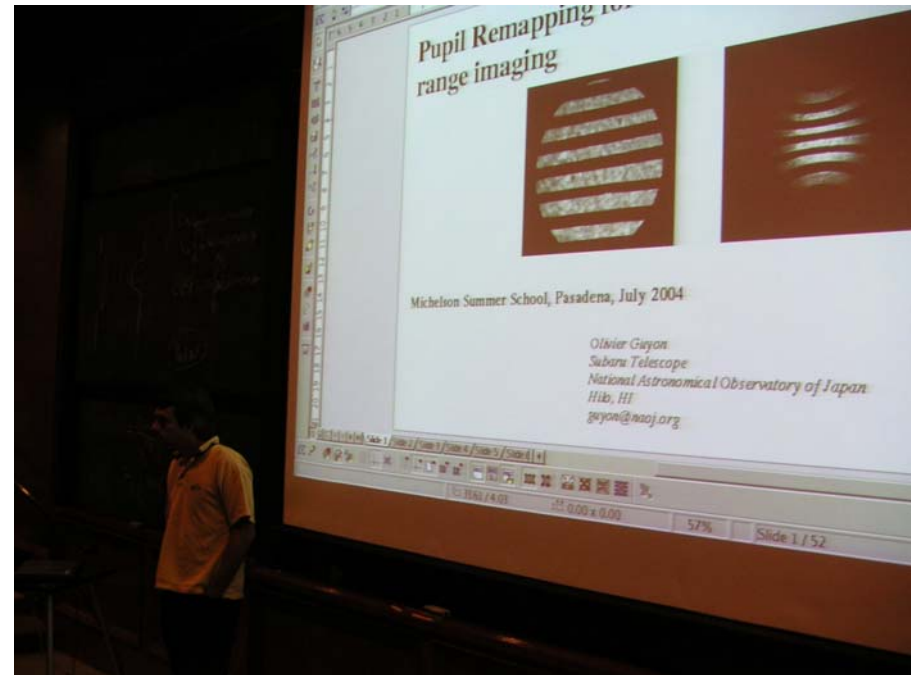
MSW / D. Gelino

3

The MSW Scientific Organizing Committee

Your MSW SOC:

- Fritz Benedict (UT Austin)
- Harold McAlister (GSU)
- Dimitri Pourbaix (ULB & Princeton)
- Ken Seidemann (U of Virginia)
- Stuart Shaklan (JPL)
- William van Altena (Yale)
- Gerard van Belle (MSC, Caltech)



The Speakers!!

- Thanks to our speakers for submitting their presentations before the workshop!
- All submitted presentations are on-line: <http://msc.caltech.edu/workshop/2005/agenda.html>



Goodie Bag Information

- In your bag:
 - Pad of paper and MSC pen
 - Bus, Mt. Wilson, and Banquet information
 - MSW Agenda
 - Pasadena, Caltech, and Paseo Colorado guides
 - MSC Brochure
- On the Registration Table:
 - Wireless instructions
 - PlanetQuest information and activities folder

Tour of Mt. Wilson Observatory

- Depart from campus Wednesday at Noon
- Need to sign up for a seat on the bus
- No time to buy lunch, so can sign up for a box lunch from Subway for \$5
 - Order to be placed at **NOON TODAY**
- Dress for walking in hot weather!
 - Hat, light clothing, sunscreen, water
- Bus will stop at Caltech and the Sheraton when we return to Pasadena
- No bus transportation from campus to Sheraton at noon

Thursday Night Banquet

- 6:30 PM at Burger Continental (Mediterranean food)
- Sign up at the registration table
- \$22 per person includes:
 - Appetizer buffet
 - Family style entrees
 - Soft drinks
 - Tax & Gratuity
- Cash bar available
- Payable in cash to Kathy when you arrive at the restaurant
- No bus transportation provided



Speaker Instructions

- 1 hour 15 min talks:
 - Includes 10 mins for questions
 - Yellow card means 15 minutes left
 - Red card means 5 minutes left
- 1 hour talks:
 - Includes 7 minutes for questions
 - Yellow card means 10 minutes left
 - Red card means 5 minutes left
- 45 and 40 min talks:
 - Includes 5 minutes for questions
 - Yellow card means 10 minutes left
 - Red card means 3 minutes left
- 30 min talks:
 - Includes 5 minutes for questions
 - Yellow card means 7 minutes left
 - Red card means 2 minutes left
- 20 min talks:
 - Includes 4 minutes for questions
 - Yellow card means 5 minutes left
 - Red card means 2 minutes left

**When timer sounds –
NO TIME LEFT!!**

General Information

- Auditorium is not locked, so leave items at your own risk
- Travel reports are to be submitted:
 - with all original receipts,
 - *after* return home

No food/drink in the auditorium, please!

Enjoy the Workshop!



*Please silence your cell phones and pagers!
(and mute your laptops)*