

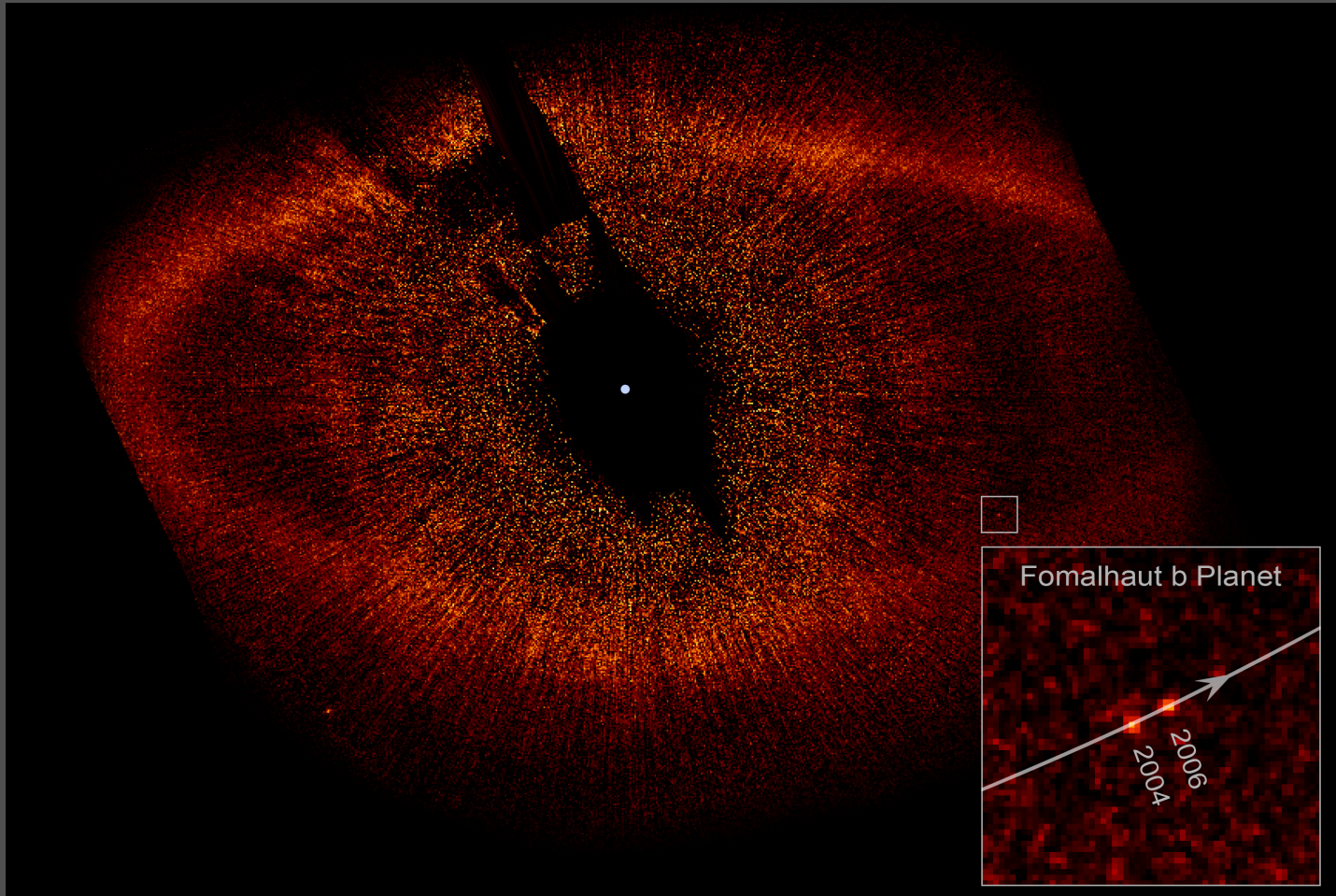


Measuring the structure of
Fomalhaut's dusty debris belt via a
fortuitous stellar occultation

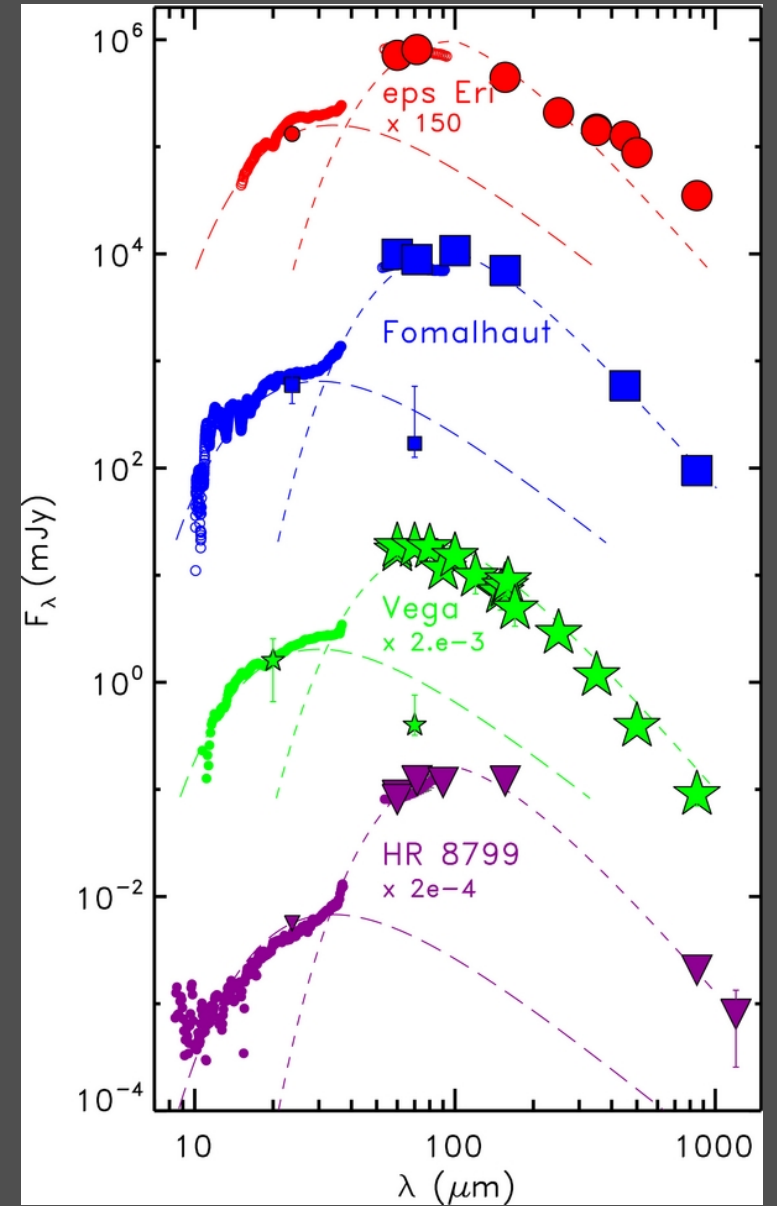
Tiffany Meshkat
IPAC Research Scientist

& Matt Kenworthy, Paul Kalas, Benne Holwerda, Kevin France

Debris disk and planet (?)

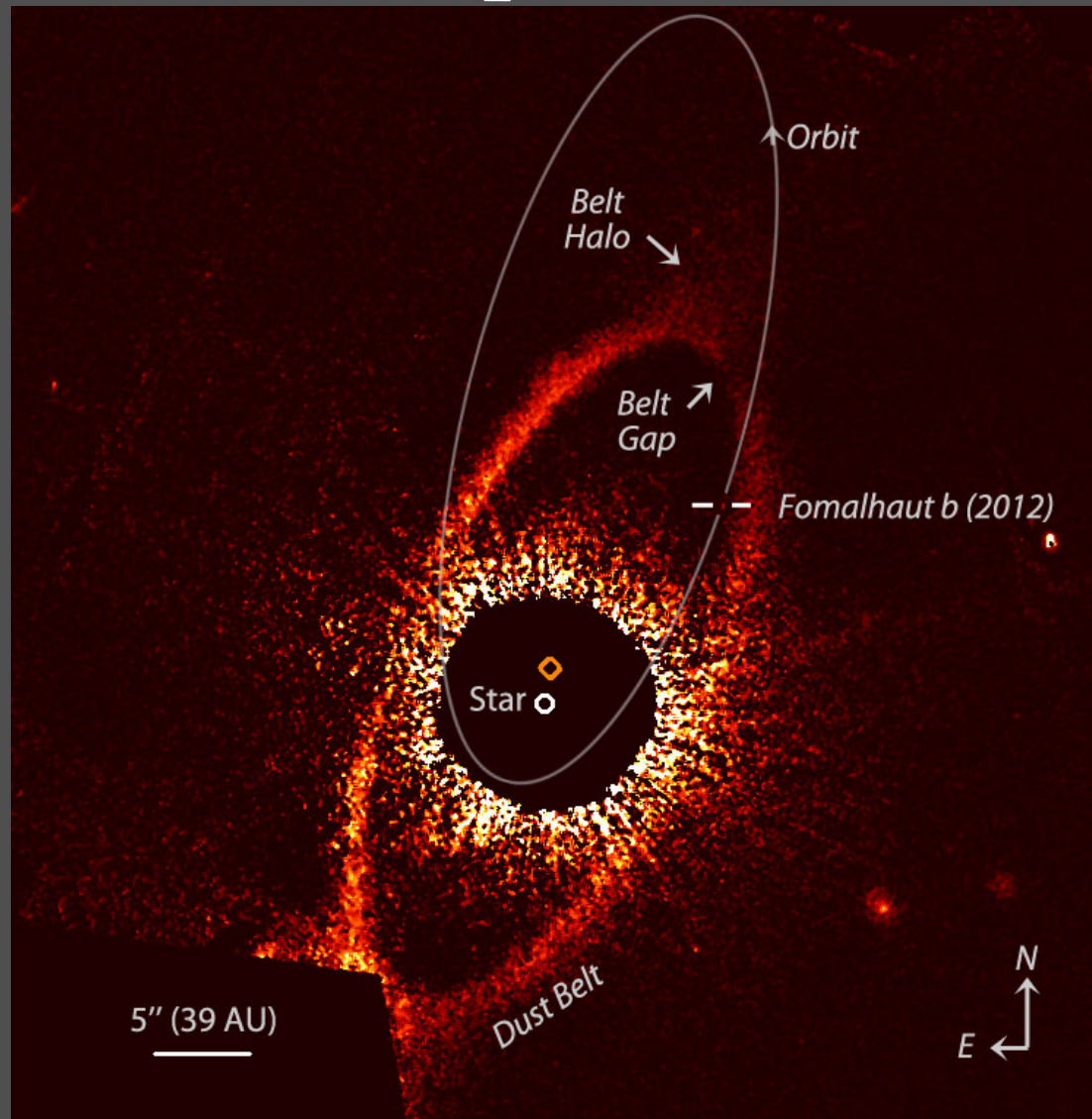


Kalas et al. 2008



Su et al. 2013

Fomalhaut b is not responsible for the disk shape



Fomalhaut is passing in front of a background star

The challenge



Work in progress

- Optical depth profile models
- Constrain the albedo of the grains
- Mass of grains, size, composition
- First experiment of this sort – sheds light on the dust structure in a known planet forming system.

